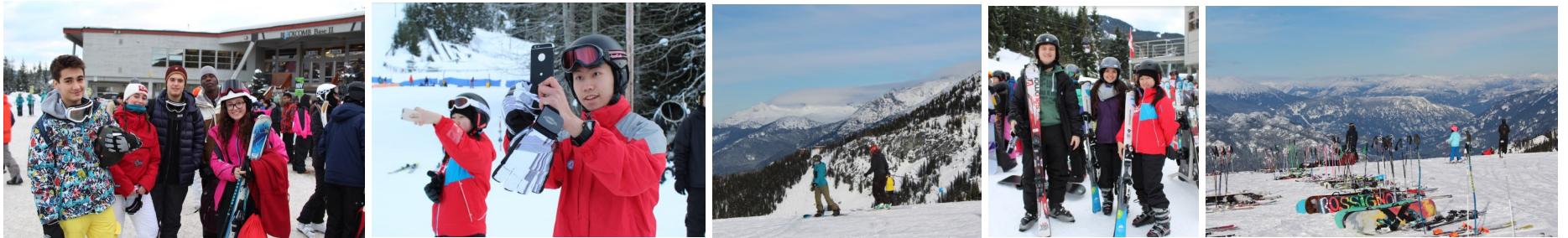




International Student Programs March Event - South End Students



Ski / Snowboard Trip to Whistler



When: March 29th, 2023

Time: Leave the School Board Office (4585 Harvest Drive) at 5:15AM, return around 6:30PM

Where: To Whistler / Blackcomb for a day of skiing / snowboarding.

Activities: A day trip to the famous Whistler - Blackcomb Ski Resort. A scenic bus trip up the Sea-to-Sky Highway and then students will go in groups, according to skill, with Whistler Ski Instructors for lessons / refreshers and a fun day on the mountain.

Cost: **\$155** with equipment rental (helmets must be worn) or **\$135** without equipment rental (you brought your own ski / snowboard and equipment with you from home).

Wear: Appropriate footwear, hat, gloves / mitts, goggles, warm winter clothing. Helmets must be worn and will be provided by the mountain if necessary.

Bring: A card to pay for lunch, drinks and snacks. You can also bring your own lunch.

Sign-up: Space will again be limited. We will open sign-up and payment later. There are multiple forms and waivers that your natural parents will need to complete before you can pay. Please discuss this with them now so they are prepared when the forms are made available.

IMPORTANT!!: Your homestay parents or parents that you live with will need to help you get to the School Board Office early in the morning. There will be a slip on the sign-up form that will be coming out soon. The link to pay online will be there as well. There will be no refunds.

There will be additional forms and information later. Have your documents ready to have a spot on the trip. You will need to provide information such as: height, weight, shoe size, and ski / snowboard experience and ability.

Remember to check your @deltalearns.ca email and Google Classroom for my sign-up form in a week or two. That response will start the process for completing the documents to go.

Bring a mask for the bus

Sign Up Starts February 17th, 2023

For More Information: Contact Brent Gibson, Homestay Manager.

Email: bgibson@GoDelta.ca / Office #: 604-952-5075 / Cell #: 604-319-0493